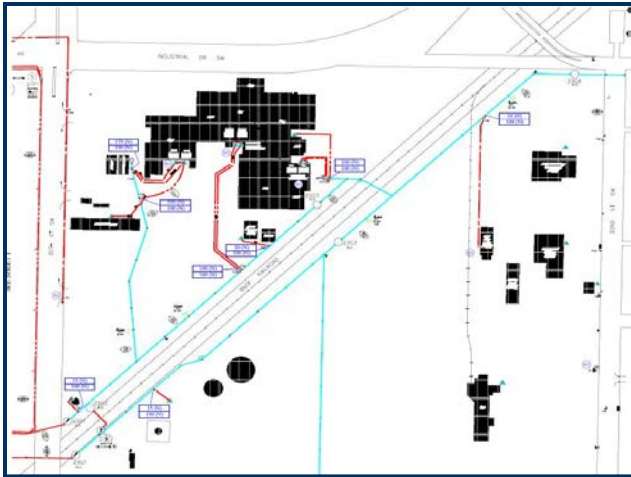


Project Brief



Coordination Study Willmar Municipal Utilities – Willmar, MN

- 12.47 kV Distribution System
- Base Load Coal Power Plant
- 2 Diesel Engine Power Plants
- 69 kV Transmission System

DGR provided a device by device coordination study for the Willmar Municipal Utilities electric distribution system.

Utilizing Milsoft's Windmil® and Light Table® software we were able to develop a system wide coordination philosophy designed to grow and develop as their system grows.

Utilizing a "zone coordination scheme" we provided recommended settings for relays in each substation as well as proper fuse and VFI selection on the distribution circuits.

The project proved to be challenging on a number of levels, including designing a coordination philosophy flexible enough to handle the activation/deactivation of local system generation.

The distribution coordination project dovetailed into a full 69 kV transmission system loop coordination analysis.

- Electric System Modeling
- Electric Distribution System Coordination
- Distribution Generation Coordination Integration

